



Jui Ming Metal Industrial Co., Ltd.

# SMS UNION FITTINGS

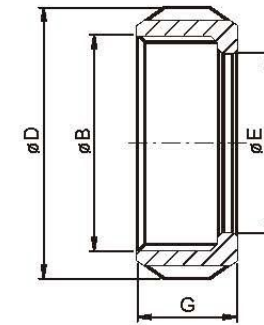


- Standards: SMS 1145.
- Applications: For the Food, Beverage, and other Hygiene Industry
- Working Pressures: Normal operating at pressures up to 6 Bar.
- Materials:
  - Round slotted Nut-----TP-304
  - Expanding Liner-----TP-304, 316, 316L
  - Expanding Male part-----TP-304, 316, 316L
  - Welding Liner-----TP-304, 316, 316L
  - Welding Male part-----TP-304, 316, 316L
  - Blank Round Nut-----TP-304, 316, 316L
  - Blank Liner-----TP-304, 316, 316L
  - Seal----EPDM, Silicone, Buna-N, Viton.
- Surface Finished: Ra Max 0.8um.
- Size range: Metric 25-104. Imperial 1"-----4"

## SMS UNION FITTINGS

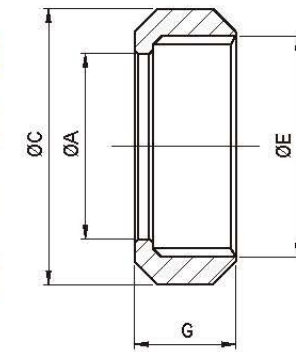


**SMS-13RW 長型圓螺帽**  
SMS ROUND SLOTTED NUT-W



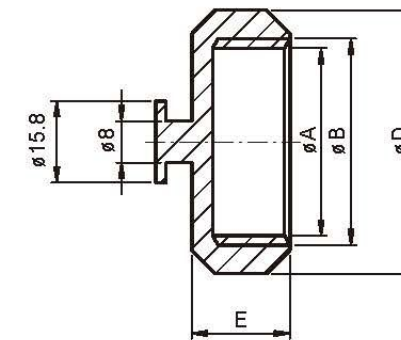
SIZE	B	D	E	G
1"	RD40*1/6	51	32.3	20
1 1/4"	RD48*1/6	60	40.0	22
1 1/2"	RD60*1/6	74	48.5	25
2"	RD70*1/6	84	61.0	26
2 1/2"	RD85*1/6	100	74.0	30
3"	RD98*1/6	114	87.0	32
4"	RD132*1/6	154	117	45

**SMS-13R 圓螺帽**  
SMS ROUND SLOTTED NUT



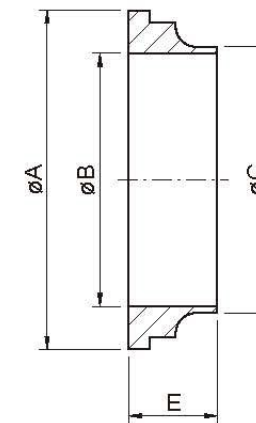
SIZE	A	C	E	G
1"	32.5	51	RD40*1/6	19
1 1/4"	40.3	60	RD48*1/6	22
1 1/2"	48.5	74	RD60*1/6	23
2"	61	84	RD70*1/6	24
2 1/2"	74	100	RD85*1/6	28
3"	87	114	RD98*1/6	30
4"	113	138	RD125*1/4	31

**SMS-13AH 盲螺帽**  
SMS BLANK NUT



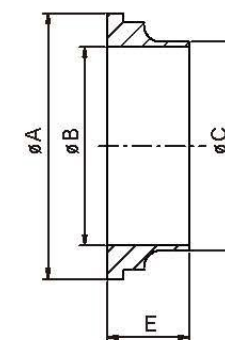
SIZE	A	B	D	E
1"	36.3	RD40*1/6	51	19
1 1/2"	56.3	RD60*1/6	74	23
2"	66.3	RD70*1/6	84	24
2 1/2"	81.3	RD85*1/6	100	28
3"	94.3	RD98*1/6	114	30
4"	120	RD125*1/4	138	31

**SMS-14 無牙接頭**  
SMS WELD LINER



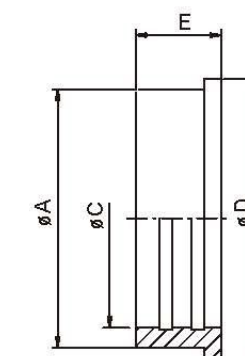
SIZE	A	B	C	E
1"	35.5	22.5	25	15.5
1 1/4"	43.3	29.3	32	16
1 1/2"	55	35.5	38	16
2"	65	48.5	51	17
2 1/2"	80	60.5	63.5	17
3"	93	72.9	76.1	19
4"	118	100.0	104	19
101.6	118	97.6	101.6	19

**SMS-14G 長型平接頭**  
SMS LONG WELD LINER-G

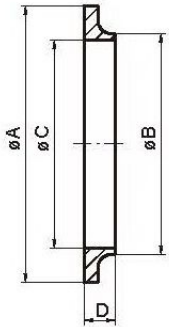


SIZE	A	B	C	E
1"	35.5	22.5	25	15.5
1 1/2"	55	35.5	38	20
2"	65	48.5	51	20
2 1/2"	80	60.5	63.5	24
3"	93	72.8	76.1	24
4"	118	100	104	30
101.6	118	97.6	101.6	30

**SMS-14R 擴管平接頭**  
SMS EXPANDING LINER

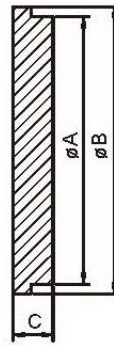


SIZE	A	C	D	E
1"	32	25.2	35.5	17
1 1/4"	39.5	32.1	43.5	17
1 1/2"	48	38.2	55	20
2"	60.4	51.2	65	20
2 1/2"	73.5	63.7	80	25
3"	86.5	76.2	93	30
4"	112.5	101.8	118	27



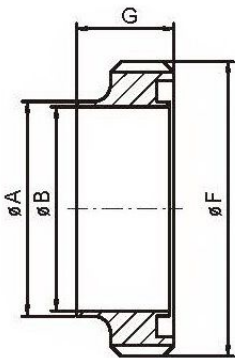
**SMS-14W** 短型無牙接頭  
SMS WELD LINER-W

SIZE	A	B	C	D
1"	35.5	25.0	22.6	7.5
1 1/4"	43.5	32.0	29.6	8.0
1 1/2"	55.0	38.0	35.6	9.0
2"	65.0	51.0	48.6	9.0
2 1/2"	80.0	63.5	60.3	9.0
3"	93.0	76.1	72.9	10.0
4"	127.0	101.6	97.6	12.0



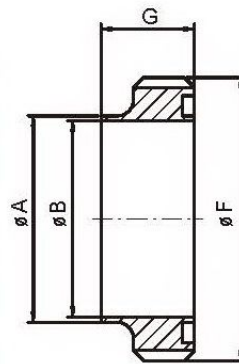
**SMS14-AH** 無牙盲板  
SMS BLANK LINER

SIZE	A	B	C
1"	32	35.5	7.5
1 1/2"	47.9	55	8
2"	60.4	65	9
2 1/2"	73.5	80	9
3"	86.5	93	1
4"	112.5	118	1



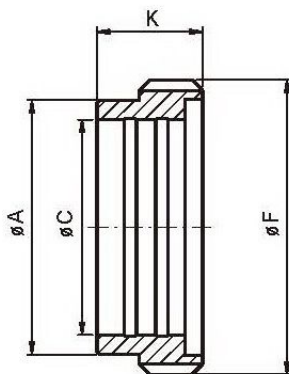
**SMS-15** 有牙接頭  
SMS WELD MALE

SIZE	A	B	F	G
1"	25	22.5	RD40*1/6	19
1 1/4"	32	29.3	RD48*1/6	20
1 1/2"	38	35.5	RD60*1/6	23
2"	51	48.5	RD70*1/6	23
2 1/2"	63.5	60.5	RD85*1/6	27
3"	76.1	72.9	RD98*1/6	27
4"	104	100	RD125*1/4	30
101.6	101.6	97.6	RD125*1/4	30



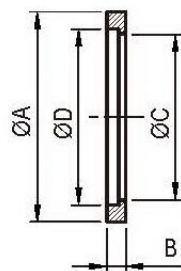
**SMS-15W** 短型有牙接頭  
SMS WELD MALE-W

SIZE	A	B	F	G
25	25.0	22.6	RD40*1/6	15
32	32.0	29.6	RD48*1/6	17
38	38.0	35.6	RD60*1/6	20
51	51.0	48.6	RD70*1/6	20
63	63.5	60.3	RD85*1/6	24
76	76.1	72.9	RD98*1/6	24
104	101.6	97.6	RD132*1/6	35



**SMS-15R** 擴管牙接頭  
SMS EXPANDING MALE

SIZE	A	C	F	K
1"	32	25.2	RD40*1/6	20
1 1/2"	47.9	38.2	RD60*1/6	23
2"	60.4	51.2	RD70*1/6	25
2 1/2"	73.5	63.7	RD85*1/6	30
3"	86.5	76.2	RD98*1/6	30
4"	112.5	101.8	RD125*1/4	30



**SMS** 墊片  
SMS SEAL RING

SIZE	$\phi A$	B	$\phi C$	$\phi D$
25	31.8	5.3	22.8	25.1
38	47.8	5.3	35.8	38.1
51	60.8	5.3	48.8	51.1
63.5	73.3	5.3	61.0	63.6
76	85.8	5.3	73.4	76.1
104	115.7	5.3	100.5	104.0